

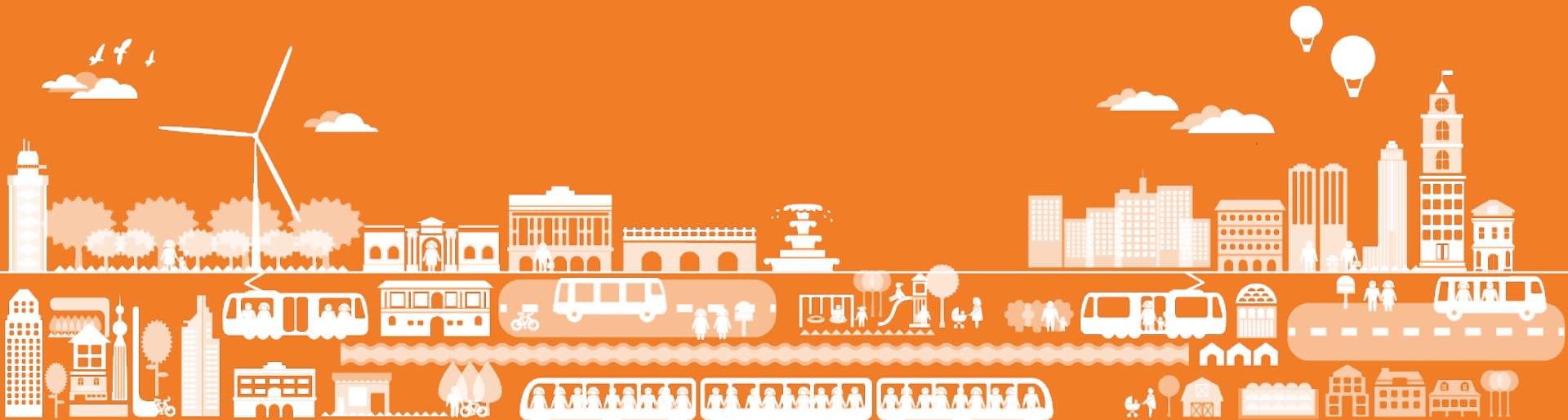
# Research area "Societal Impact"

---

Désirée Nilsson, Malmö högskola/K2

IAG discussant

Tom Rye, Edinburgh Napier University



# Societal Impacts - Aim and scope

*To develop knowledge and understand the connections between public transport and the development of society; and to understand whether this knowledge can be used to improve appraisal methods*

- Several projects in various sizes ranging over a couple of months to a duration of several years.
  - Many organised in the K2 main project “**The Contribution of Public Transport to Societal development**”
- Most are financed by K2
- Two larger projects are externally funded.

# Participants

---

Désirée Nilsson (MAH)

Anna Anund (VTI),

Claus Hedegaard Sørensen (VTI),

Lena Hiselius (LU),

Erik Johansson (LU),

Karin Grundström (MAH),

Erika Knoblock (Malmö Stad),

Einar Tufvesson (Trafikverket),

Vanessa Stjernborg (MAH/K2),

Ola Mattisson (LU),

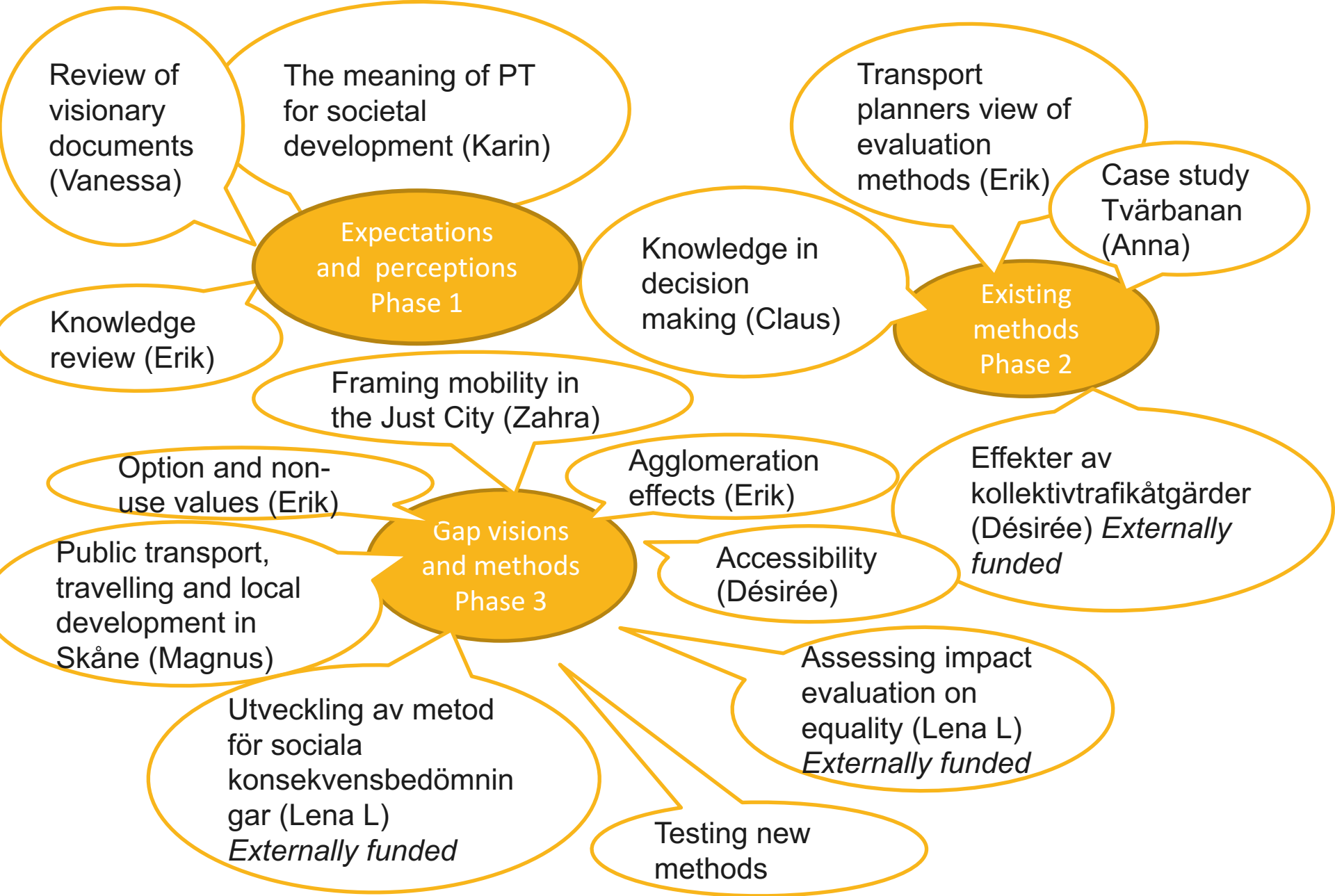
Zahra Hamidi (MAH/K2),

Lena Levin (VTI),

Magnus Andersson (MAH),

WSP,

Trivector



# “The Contribution of Public Transport to Societal development”

---

## Purpose

*Explore how the contribution of public transport to societal development is understood and evaluated.*

# Public transport's societal impacts: an overview of evaluation tools

---

Erik Johansson, Lena Hiselius and Anders Wretstrand,  
K2 Outreach

- Provide an overview of different evaluation methods that are and can be used for investments in public transport.
- Offer a structure for these methods and for what purposes they can be used, while also offering a theoretical context.

# Public transport's role for local society: a study of regional and municipal policy documents

Ola Mattisson (LU) and Vanessa Stjernborg (K2/MAH), [K2 Working paper](#) (an updated version have been sent to scientific journal)

## Study how

- local governments in Sweden view the role of public transport in society, and to
- investigate how public transport is used in a strategic capacity.

By studying general policy documents, the ambition is to gain a wider understanding of the role of public transport based on the societal context it is situated in.

# Reflections on some findings

- The view on public transport at the local and regional level appears **not to have changed** much over the years (2008-2015)
  - also a **wide variety** in the extent of prioritizing public transport
- The role of public transport is commonly described in **positive terms**
- Public transport is regarded as an **important factor** towards achieving other societal ambitions and goals, particularly those related to economic and environmental issues
- The workshop participants and interviews with public transport planners indicated that the focus on **societal development is extending** to include more areas such as social inclusion.
  - Also of interest to the “National negotiations on housing and infrastructure”
  - Also looking for more standard ways of measuring these effects .



# Implementation of a method for gender equality impact assessment in transport infrastructure planning

Financed by Vinnova,

Project leader: Lena Levin, K2/VTI,

Current Publications:

- Lena Levin, Charlotta Faith-Ell, Christina Scholten, Åsa Aretun, Jon Halling och Karin Thoresson. (2016). **Integrating equality in regional transport planning**. K2 Research 2016:1.
- Jon Halling, Charlotta Faith-Ell och Lena Levin (2016). **Transport planning in development. A handbook on gender equality impact assessment in transport planning**. Lund/Malmö/Linköping/Stockholm: K2.



# Reflections and discussion

---

# Reflections/questions from discussant

- If more impacts of PT (e.g. Equality, social justice) included in evaluation - better case for investment?
- Politicians/senior decision makers' see automatic link between public transport investment and economic growth – is there evidence to support this?
- If not is this due to little research in area; or little clear evidence from the research that's been done?
- Summary of current appraisal of economic growth impacts – useful for politicians/senior decision makers?
- Or is it better for PT if people just believe “PT investment (esp rail) = economic growth” – a more nuanced view wouldn't help the case for PT?
  
- PT investments can move economic growth around, to those points where accessibility is increased. Why/how is this a benefit? Do our appraisal tools help us to assess this benefit fully?

# Ongoing projects

---

# Ongoing projects

- Focus group study of stakeholder assessment and criticism of evaluation methods (Anna Anund (VTI) and Erik Johansson (LU/K2))
- A qualitative study of public transport planning and its use of evaluation methods Erik Johansson
- “The meaning of Societal Development and how public transport contributes”, Karin Grundström (MAH)
- “Use and influence of knowledge in decision making on public transport”, Claus Hedegaard Sørensen (VTI).

# Ongoing projects – K2 minor projects

---

- "Option values and public transport" Erik Johansson och WSP
- "Public transport, travel patterns and local development in Skåne" Magnus Andersson, Helena Bohman and Eigo Tateishi (MAH)

# Ongoing projects

---

## Externally funded

- "Effects of public transport measures – a knowledge review" – Désirée Nilsson, Vanessa Stjernborg (MAH) and Trivector, funding: Swedish Transport Administration
- "Developing Social Impact Assessment (SIA) For Swedish Transport Planning: A Transdisciplinary Approach", - Lena Levin (VTI), funding: FORMAS

# Stakeholder involvement and co-production

- Active participation in developing ongoing and new research projects.
  - City of Malmö and Swedish Transport Administration
- Bridging between policy and research
- Highlighting contradicting goals in politics and policy implementation
- Participants in workshop from various organisations, such as City of Malmö, Swedish Transport Administration , Västtrafik, Spårvagnsstäderna, Resenärsforum, Region Skåne, Samtrafiken, Sveriges Bussföretag



# Reflections and discussion

---

# Reflections/questions from discussant

- To what degree might this work really produce improved evaluation methods?
- To what degree do evaluation results actually guide project investment – will Claus' work tell us?
- Co-production – how is it functioning?
- Results of this work – how is it disseminated? Different products/formats for different target groups? How do you engage with your target groups for dissemination?
- How do you integrate the different research projects? Do different researchers meet each other, learn from one another?



Thank you!

